



Agmi T&L

tunnel & lighting solutions

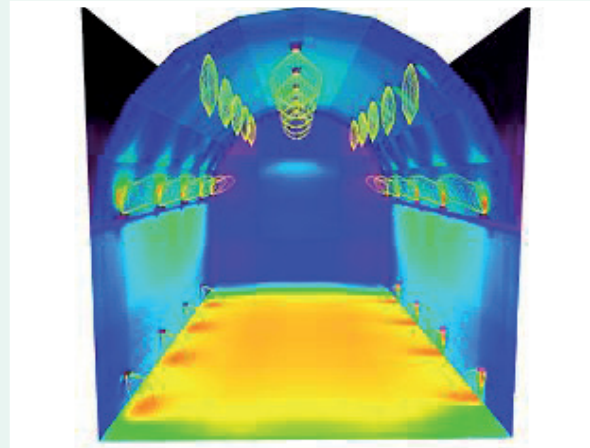


LED Lighting in Data Centers



LED Lighting in Data Centers

Agmi T&L in collaboration with Ab Vingerling from Polymorfo has developed a LED-line Lighting which can replace the current traditional lighting in Data Centers with an equal, even better lighting in the data rooms. In addition to Data Centers, this LED-line lights also suitable for business/factory halls and gymnasiums. The customer can choose a fully intelligent automatic or stand alone system. For areas where it isn't a safety issue is the stand alone system perfect. With this system you also benefit the same advantages than the fully automatic intelligent system as the lifetime, sustainable savings in energy en cost, high luminescence etc. The fully automatic system from the LED-line is designed as a modular system, the LED line armatures offer a standardised system that can be adapted to fit the requirements of any situation. The lighting is easy to use and can be controlled through a patented Driver system, which can create any lighting condition, half dimmed or turned on per segment. Everywhere in de world you can check the status or consumption of the lighting. The technique is proven in tunnel projects and from these applications is a new, very robust LED-line lighting developed with a large shadow-free light output.



Project management

LED lighting for Data Centers is a job for the specialists. You can't afford to leave it to chance. With our dedicated team of experts, Agmi T&L and Polymorfo can provide the project management. Our tried and tested OPPOF concept – which delivers Design, Production, Installation, Maintenance, Management and Financing – offers an integrated solution to challenging projects.

Design

Agmi T&L takes a flexible approach to design, and understands that each situation presents a different set of needs and requirements. Our approach is wide-ranging, with particular emphasis on the following:

- A product designed to meet your specific needs.
- An analysis of your requirements and the relevant norms and guidelines.
- Calculations.
- A design prototype.
- A sketch design of the concerning area installation.
- Provision of the required documentation flows.
- The development of modular products.

Our expert team of engineers and project managers is on hand for these and other aspects of the design process. And you can rest assured that our design will meet the most stringent standards and guidelines

that apply to the concerning area. And each and every product we design can be produced.

Production

Because Agmi T&L manufactures the product it designs, you know you are always purchasing directly from the source. You are dealing with one company, not an intermediary. This means that Agmi T&L guarantees speedy delivery dates, so that any damaged installations can be up and running in next to no time. Agmi T&L also takes responsibility for ensuring that every product meets current quality requirements, and each product is subject to a thorough quality check. The Agmi T&L production team manufactures every product in strict accordance with ISO 9001 standards.

Installation

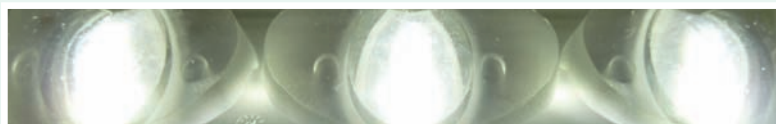
With proven technical expertise in assembling and securing installations, Agmi T&L possesses specialist product knowledge that guarantees the products will be mounted safely. Agmi T&L is specialised in assembling and mounting all products. Use Agmi T&L and save time and installation costs.

We also provide projects on a lease basis, so you can spread the costs over several years.



Important advantages

- **Modular system**, modular operation, profiles and lenses.
- **Very long lifetime**, at least 25 years (theoretical 43 years).
- **Diverse lens modules**, in accordance with the A-symmetrical and lighting principle.
- **Sustainable**, offering significant energy and cost savings.
- **Accessible for maintenance**; profile opens easily for maintenance.
- **Intelligent system**, automatic report, dimming pattern, temperature and maintenance intervals.
- **Built-in or externally mounted**; armatures can be built into the ceiling or mounted onto it.
- **Redundant power**, for both electricity supply and communication.
- **Risk-free**, in accordance with the recommendations of the NSVV (Netherlands Foundation for Lighting Technology).
- **Short circuit proof and self-restoring**; if one or more profiles are defective, the other profiles re-strike in phases and can be programmed to compensate for any loss of light.
- **Fail safe is performed**; in the event of emergencies, the systems switches luminosity strength 100% automatically.
- **Easy to handle**, lightweight and in standard, manageable lengths.
- **Flexible**, speedy assembly of profiles, lenses, LED strip and control system.
- **Cable protection**; input and output are built into the armature.
- **Solid construction**; construction consists of hingeable aluminium profiles.
- **Anodised in black**; no discolouration from pollution.
- **Easy to clean**; lighting armatures can be cleaned by a high-pressure spray pistol.
- **Low capacity**, runs on 350 Ma. (when dimmed).
- **High luminescence**, almost no loss of light and good distribution of light through the modular placement of LED's.
- **Good warmth regulation**; an integrated cooling element is built into the armature.
- **Compatible with numerous networks**, such as PRO FINET, Profibus, Devicenet, Etherhnet IP, and Interbus.





Polymorfo

Noordhavenpoort 40
2152 HB Nieuw Vennep
The Netherlands

T +31 252 625 311 F +31 252 625 702
ab@polymorfo.com www.polymorfo.com



Agmi T&L

tunnel & lighting solutions

Agmi T&L

Postbus 3028, 5930 AA Tegelen
Steenweg 11b, 5932 AC Tegelen
The Netherlands

T +31 77 - 373 91 00 F +31 77 - 373 91 90
info@agmi.nl www.agmi.nl

